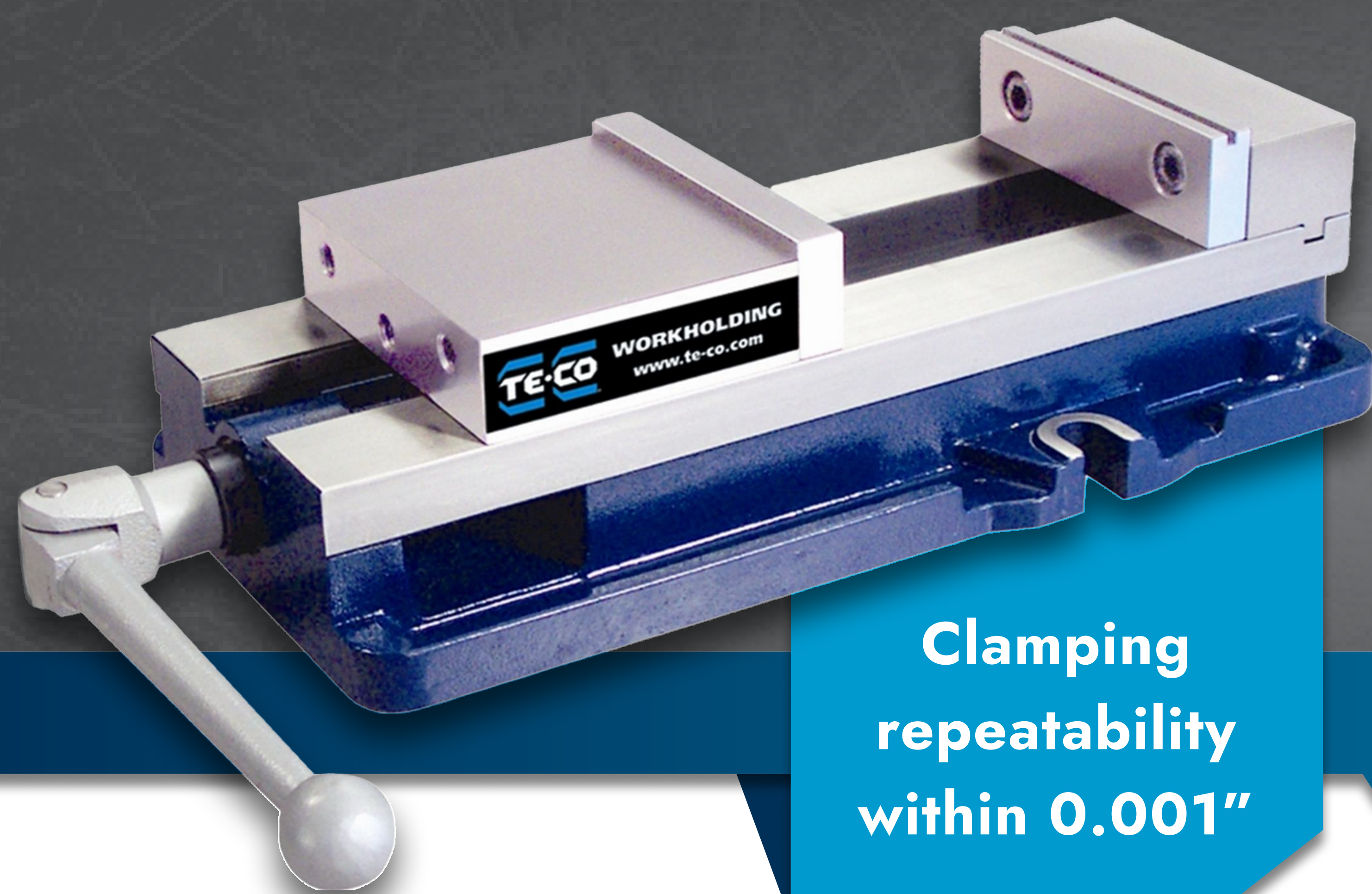


Single Station Vises



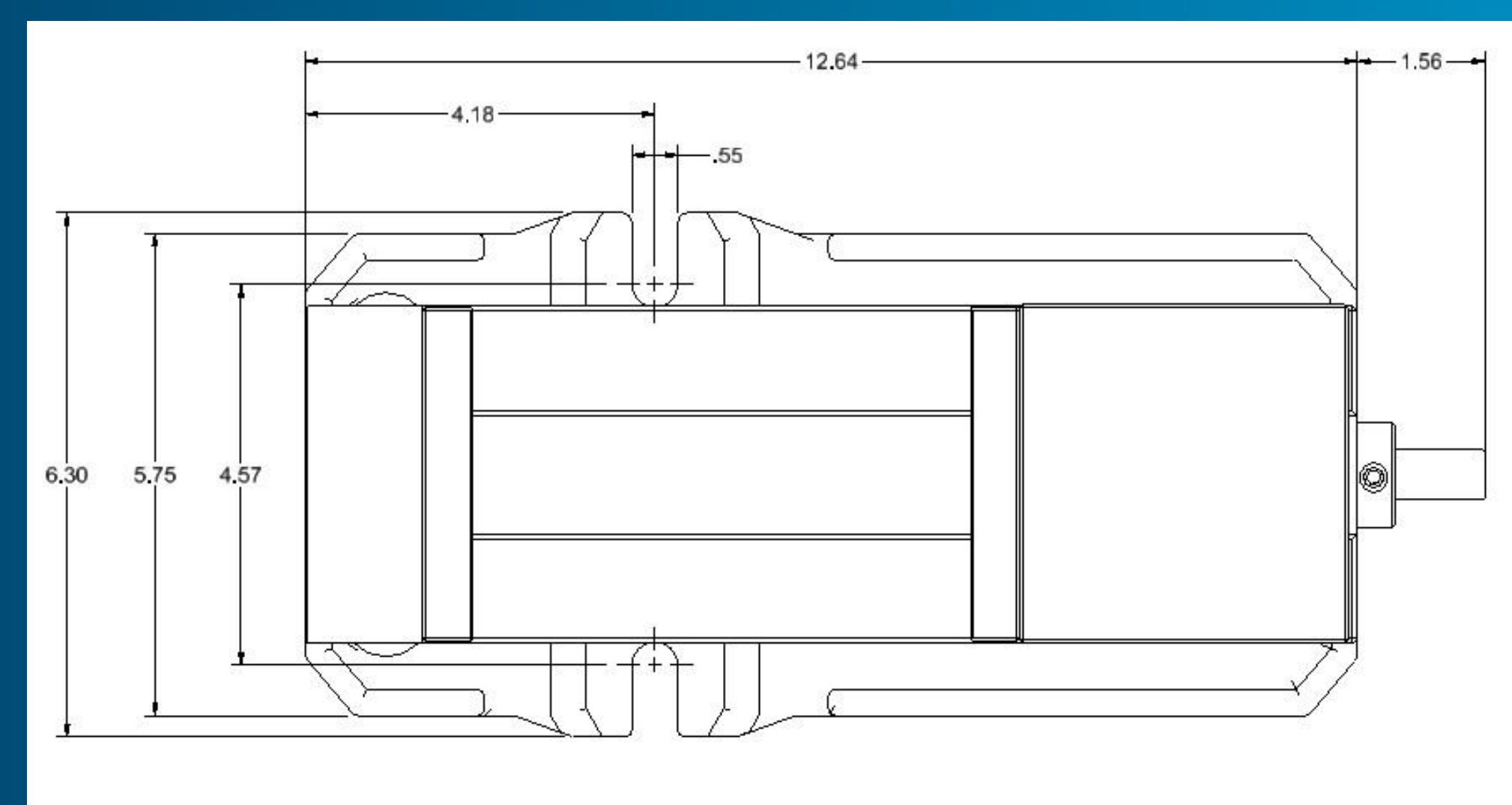
Clamping
repeatability
within 0.001"

THE VISE THAT GETS THE JOB DONE

- Hardened vise bed and jaw plates
- 80,000 psi ductile iron body
- Outside rails of body are machined within 0.0005" (0.013mm) square to jaw
- Sealed and lubricated thrust bearing for maximum life and minimum torque
- Footprint and distance from the keyway to stationary jaw meets industry standard

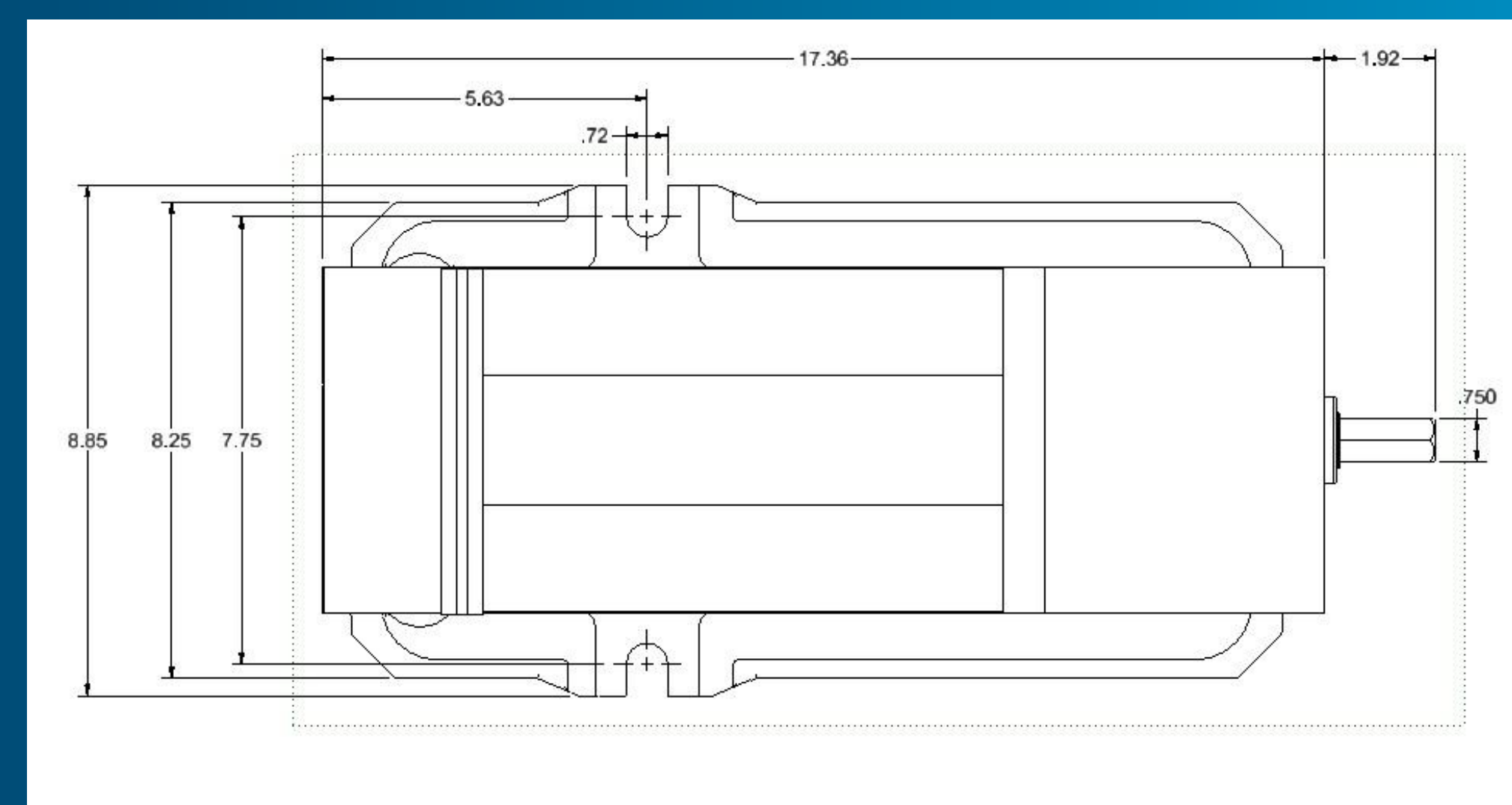
PWS-4600

- **Jaw Width:** 4 inches
- **Max Jaw Opening:** 6 inches
- **Clamping Force:** Up to 7,000 lbs
- **Bed Height:** 2.250" \pm 0.0005"



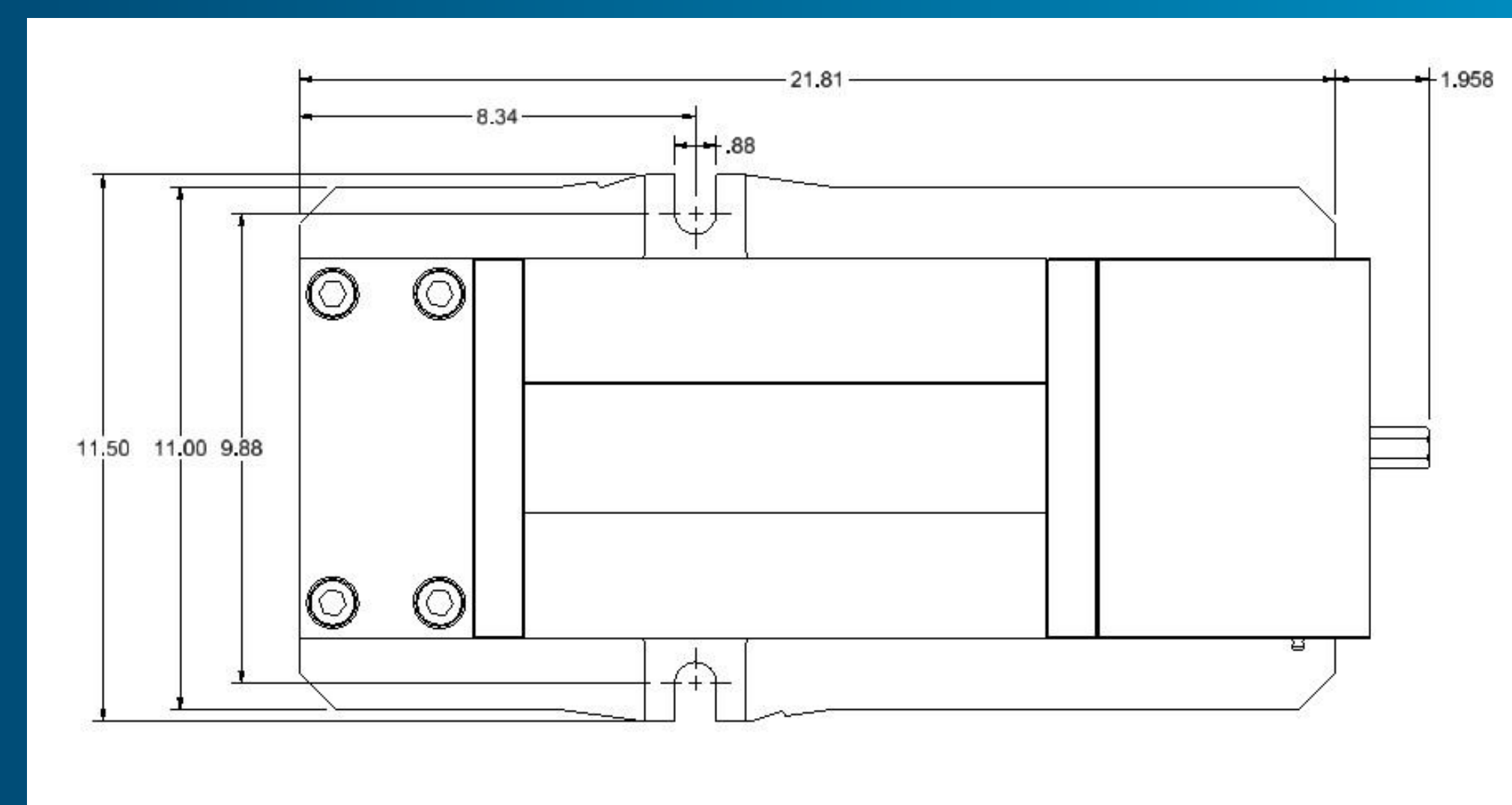
PWS-6900

- **Jaw Width:** 6 inches
- **Max Jaw Opening:** 9 inches
- **Clamping Force:** Up to 8,200 lbs
- **Bed Height:** 2.875" \pm 0.0005"



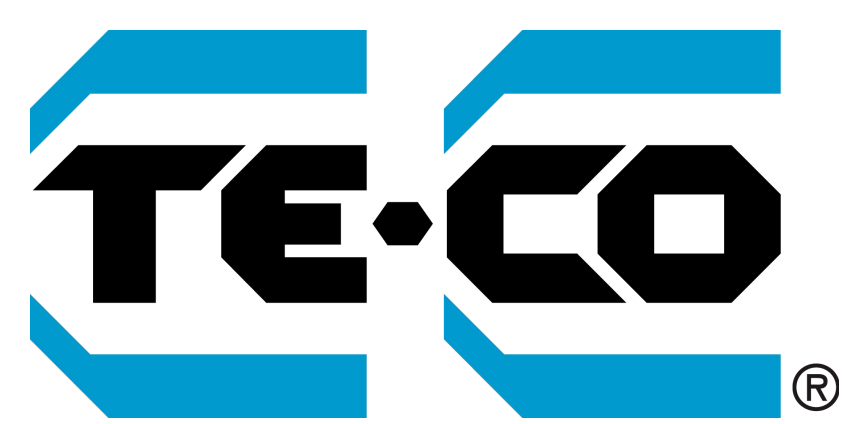
PWS-8110

- **Jaw Width:** 8 inches
- **Max Jaw Opening:** 11 inches
- **Clamping Force:** Up to 12,000 lbs
- **Bed Height:** 3.310" \pm 0.0005"



Contact us today for more information!

(855) 499-6454 | www.TE-CO.com

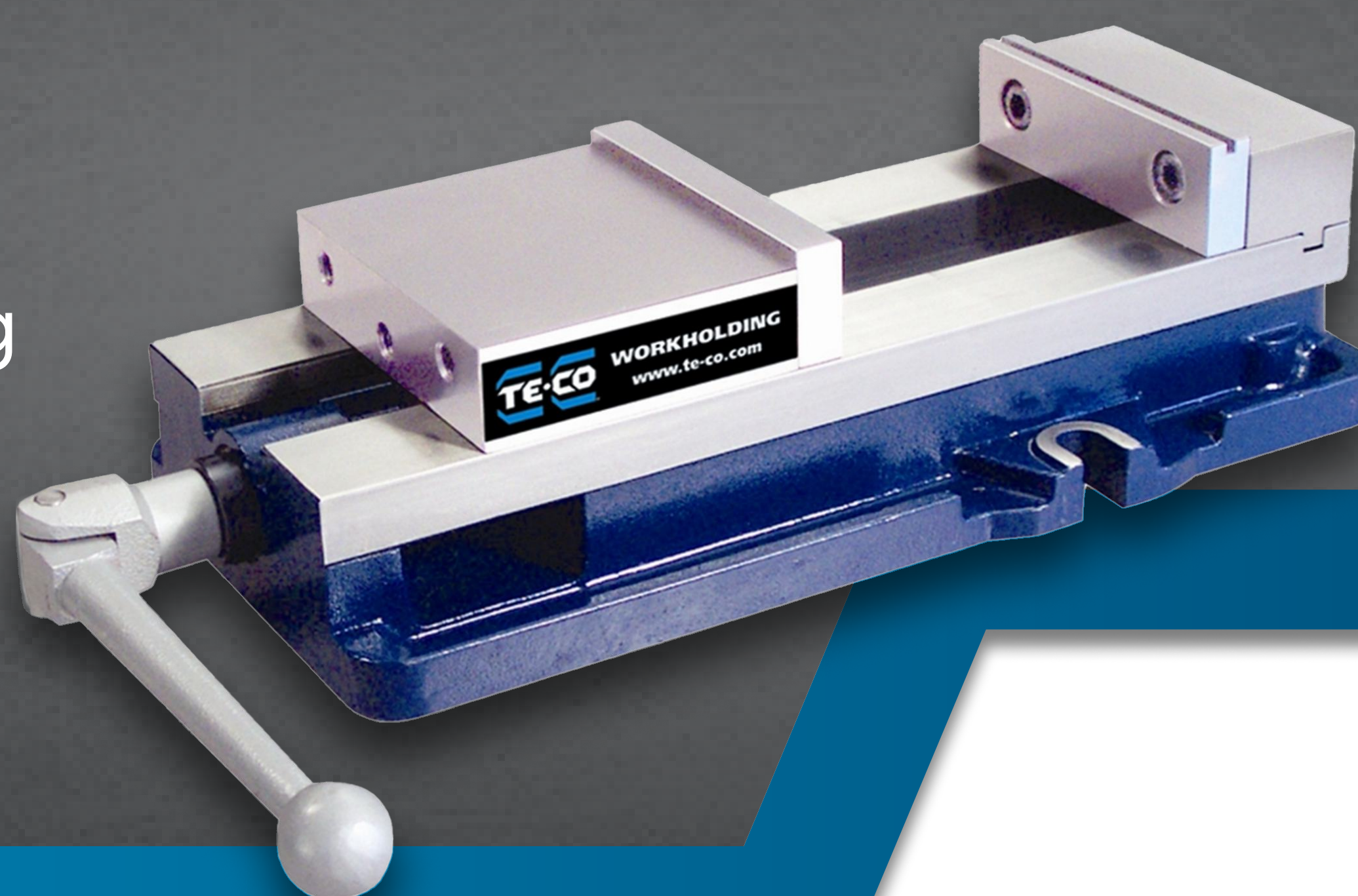


Accessories

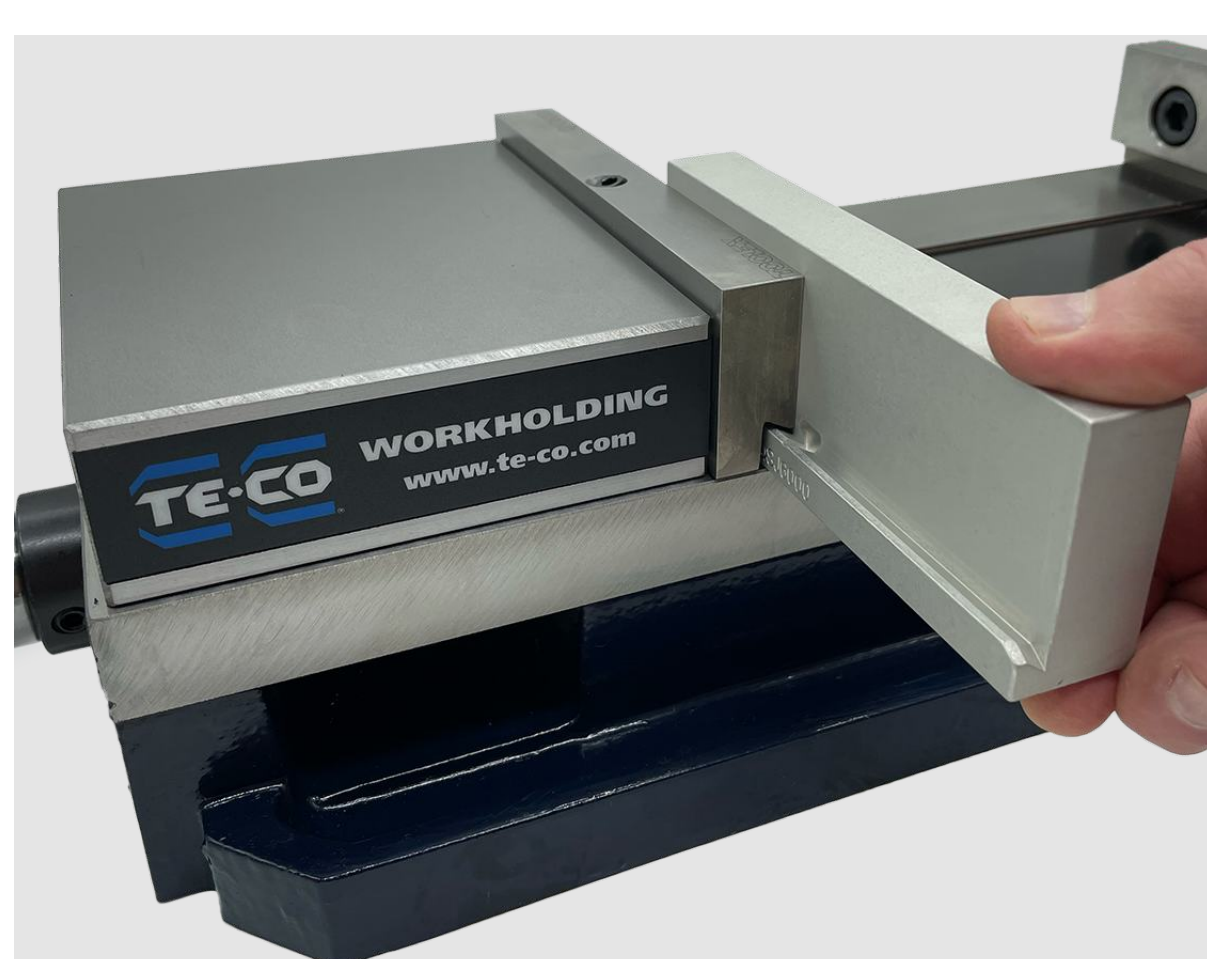
SINGLE STATION VISE ACCESSORIES

Upgrade your vise with innovative TE-CO accessories that reduce downtime, simplify setups, and ensure consistent precision, saving you valuable time and money.

Invest in TE-CO - invest in smarter clamping.



SCAN TO
LEARN
MORE!



QuickChange™

- **Rapid Changeovers:** Decrease downtime by sliding parallels seamlessly into place.
- **Reliable Performance:** Maintain consistent and high-quality clamping.



AccuSnap®

- **Effortless Setup:** Snap parallels into master jaws for fast, accurate setups.
- **High Precision:** ± 0.0002 tolerance ensures consistently precise and repeatable parallel location.



QuickStop

- **Fast Setup:** Reduce setup times with full adjustability and quick positioning.
- **Versatile:** Accommodates a wide range of workpiece configurations and sizes.



ParaKeep™

- **Secure Hold:** Keep parallels in place, eliminate lost time, and increase efficiencies.
- **Simple Installation:** Easy to use and install, streamlining part changes with ease.



Contact us today for more information!

(855) 499-6454 | www.TE-CO.com